



INSTALLATION GUIDE

It is recommended that his product be installed by a licensed plumber in compliance with regulations of your state.

This is to be read in association with the additional information provided with the RAM Tap ware installation instructions.

INCLUDED CONTENTS

Prior to commencement of installation, please check that the following are included;

- 2 metre [80"] stainless steel flexi hoses [Boston] 2 units
- Reducing bush – brass 20mm X 5mm 2 units
- Flexi hose drain 30mm X 1 metre by Hepflex with 3 fittings
- Boxed complete custom tap set

INSTALLATION

There are 2 means of installation, these are;

- [a] connecting the incoming water supply via provided stainless steel flexi pipe in a similar fashion to a washing machine.
- OR [b] connecting the plumbing directly into the existing water supply like a traditional bath.

The use of the letters [a] or [b] in these instructions is referring to which method being used.

At all times take care to prevent scratching or marking the bath during installation.

[1] Remove protective packaging. Determine if all side panels are to be retained for your particular installation need. See 'Removing and replacing Panels' instructions at the end of this document

[2] Determine placement position of the bath on site to allow rough in to be done prior to siting of bath; mark boundaries on wall and floor.

If using install method [a] you can buy a standard laundry conversion unit [Reece part number 100854, \$106.59 pair]. These are taps which replace the existing shower taps. They have **two** tap handles on **each** tap, one which can allow the existing shower function to be retained; the second which controls the flow into a screw thread outlet, similar to the one on your washing machine supply taps. The plumbing kit provided with the bath has the necessary fitting to connect this outlet, via the 2 included 2 metre long flexi pipes [Watermark approved W258], to the RAM tap inlets. Use the provided brass reducing bush fittings to connect the hoses to the RAM taps

Check the flexis are of sufficient length to go from RAM taps, under the bottom of the bath wall and upwards to the existing shower tap location. If there is insufficient length, bore 2 holes in the end fibreglass [tap] panel [or top panel adjacent to the RAM taps]. Use a pair of grommets to finish these holes neatly.

If using install method [b] determine area of tiling which can be broken i.e. below sight line of bath, to do rough in that is covered by the bath when installed.

Rough in hot and cold pipe work to protrude 150mm from wall, terminating in 3/4" male thread. [when bath is fitted these will connect to flexi hose]. These pipes are 500mm from floor and 150 mm from corner on the edge of bath opposite the opening door.

[3] Bath plumbing

- install RAM taps to bath [supplied] into the 3 holes in the bath hob; hot on left, cold on right [from the perspective of the person sitting in the bath]
IMPORTANT Read the instructions provided in the tap kit carefully to ensure correct fit.
- install provided brass adaptors to RAM tap inlet threads under hob. These allow connection to the stainless steel flexi hoses provided.



[4] Drainage

- ensure existing drain is under footprint of bath
- The waste pipe is a quality HepFlex fitting. Screw provided ribbed flexi hose into underneath of bath waste prior to putting the bath into place - firmly screw by **hand**. Cut hose to length needed to fit into floor drain, connect provided flexi termination fitting by applying solvent to both surfaces. Fit end of drain into floor waste when positioning bath.

[5] Bath positioning

- Put bath in exact location

- Connect water supply to bath;
Install method [b] run hot and cold pipes for bath from tempering valve [if used], and cold water, along back at bottom rear of bath to taps. Connect flexis to fitting previously plumbed in to RAM taps.
Install method [a] connect flexis from RAM taps to laundry conversion unit described in part 2 of these instructions
- **IMPORTANT hand** tighten flexi pipe end nuts **ONLY**; do not use tools for this.
- Check for plumbing leaks
- Connect drainage pipe to floor drain; you may need to place chocks under the stainless steel support bar temporarily to gain access room to screw in drain.
- The 2 front panels on the door face of the bath are held in by magnetic catches. If they need to be removed for servicing or for easier access, they can be removed with a suction cap or by prising away from the bath with a small screwdriver or paint scraper. Cover the screwdriver or scraper with a cloth to prevent scratching the bath.
- Level bath with adjustable feet. There are 6 feet with 2 nuts on each leg, ensure they are correctly aligned and tightened.



- Check for door leaks, fill bath.; if leaks are found in the door this is invariable due to uneven adjustment of the 6 support feet causing twisting of the bath; check level all ways with spirit level
- Replace fiberglass panels where needed; screw into existing holes
- White silicon seal around top and side contact points with wall if against wall
- Add cushion seat and neck cushion.

[6] SPA OPTION ONLY - install a **waterproof** GPO on corner wall with safety switch; unit uses 1000W; 300mm from floor and 300mm from corner on the edge of bath opposite the opening door. A 3 pin plug on the bath connects to this. Where possible run cable to bath in a concealed location e.g. in wall cavity, through wall etc. **TO BE DONE BY AN ELECTRICIAN**

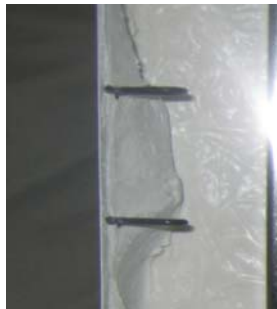


REMOVING & REPLACING PANELS

- Pull **bottom** of panel out about 5 cm at the front [door] end, it is held in place by a magnetic catch



- Remove panel by pulling it down and forward to free it from the securing holders [shown below]



- Remove screws securing bath to pallet that go through the black feet into the pallet

Refit panel by inserting it into securing holders at the front and top of the panel and push it inwards to connect with the magnetic catch and into the securing catches on the back panel; below is photo of inside of side panel showing magnetic catch at lower centre and securing holders



Removing panels on the door side of the bath – these panels are held on by magnetic catches to allow servicing, and can be removed by suction pad or putting a flat blade [e.g. wide screwdriver] covered with a cloth into side seam of panel and lift outwards. Photo below shows panel removed and showing magnetic securing catch



Windsor Baths Australia 1800 983 996 Fax 02 88 504692
Tall Poppy Technology PL T/A Windsor Baths ACN 15 092 227 248
8A Glenhaven Rd Glenhaven NSW 2156 ; www.windsorbaths.com.au

Established 2000



OWNERS INSTRUCTIONS

Care and Maintenance

It is easy to preserve the lasting glow and beauty of your Windsor Bath.

Periodic cleaning will ensure years of bathing pleasure. To clean, use any liquid type detergent with a soft sponge or cloth and warm water.

Never use abrasive cleaners, metal soap pads, acetone, dry-cleaning fluid, window cleaning sprays, or ammoniac compound on the surface of the bath or on the plating of your chrome air jet heads.

Stains, dulled areas, and light scratches can be removed by gently rubbing with an automobile type cleaning compound followed by an application of any household paste wax.

Operation Instructions

1. Open the door.
2. Enter the bath and while standing in the bath, close the door. Close the door and gently push the door securing handle down. The handle does not need to be fully pushed down, only push until door is secured.
3. Gradually turn on the hot and cold water and adjust the flow until a suitable temperature is achieved.
4. Fill the bath to the desired level.
5. After bathing has been completed, remove the drain plug by use of the attached chain.
6. Do not attempt to open the door until all of the water has drained out of the bath.
7. To open the door, simply pull the securing handle towards you and open the door.
8. Exit the bath, pay close attention to the small step.
9. **NOTE: Leave the door open after use.** Failure to do so may lead to water weeping through the door seal.

OPTIONAL HYDROTHERAPY HEATED AIR SPA OPERATION INSTRUCTIONS

The air blower is equipped with an integrated air heating element, built in electronic control, variable speed pulsation cycle, a 20 minute delay switch, and an automatic drying cycle.

The electronic key pad is installed on the bath rim and should not be relocated or tampered with at any time.

Key Pad Operation

Touch Pad 1: On / Off

1st Press Blower turns on
2nd Press Blower turns off

Touch Pad 2: Motor Speed

Press and hold to decrease the blower speed.

When blower is on, motor speed goes down. Release pressure on pad at desired speed.

Touch Pad 3: Motor Speed

Press and hold to increase the blower speed.

When blower is on, motor speed goes up. Release pressure on pad at desired speed.

Touch Pad 4: Pulsation Mode

1st Press Wave-Speed will vary gradually from maximum to minimum.

2nd Press Pulse-Speed will go directly to minimum and then straight back to maximum

3rd Press Returns to maximum speed

Advanced Function: A drying cycle will automatically start the blower for one minute, 20 minutes after the air massage system is stopped. The Led Light flashes when the system is waiting for the drying cycle to begin.

24 Hour Programmable Drying Cycle

The system must be stopped prior to activation or deactivation.

Activation:

Determine at which time you wish the purge to activate. At that precise time, press and hold touch pad 3 on the keypad for 5 seconds, the led will flash twice to confirm activation. The purge cycle will now start at the programmed time every 24 hours.

Deactivation

Press and hold touch pad 3 on the keypad for 5 seconds. The led will flash once to confirm deactivation

Troubleshooting

Blower fails to operate

1. Verify that electronic touch control is connected properly.
2. Check electrical power supply. Reset circuit breaker or replace if necessary.
3. Check ground fault circuit interrupter. Reset if tripped.
4. If the system has been functioning for some time, it is possible that the thermal protection control has shut off the motor. It has indicated that the system should shut off. Wait at least 30 minutes before using the system again.

Motor runs but no air comes through the jets

1. Verify that the main air hose from the manifold to the blower is connected. If necessary, reconnect and tighten the clamps.

Air outlets of jet heads are obstructed

1. If the air outlet of a jet heads is obstructed by soap or other residues, open the door and add some water to the bottom of the bath. Brush around the jets gently with an old toothbrush or similar.
2. If this fails, carefully knock on the jet head while the air blower is running with a screw driver handle or similar plastic object.

The drying cycle

1. The electronic control on the Air Massage Bath is programmed to automatically turn on the drying cycle 20 minutes after the system was shut off. This drying cycle blows very hot air through the piping for 1 minute to dry the jet heads. Do not interrupt the cleaning and drying cycle. If you stop the system during the cycle, the program will start at the beginning and new drying cycle will start 20 minutes later.

The air heater seems to not work

1. To verify the operation of the air heater, fill the bath to a working level and operate the air blower at high turbulence for approximately 5 minutes. Carefully feel the flexible connection hose where it connects to the air blower. The hose and its immediate area should feel warm to the touch. If not, contact your local distributor.
2. If the bath is installed against an outside wall, it is recommended that adequate insulation is installed to the wall to minimize heat loss of the air around the bath.
3. Skin sensitive people may experience the cold air effect which is called by the sensation of air bubbles running along the wet skin and providing the bather with a shivering sensation of cold air. Note: Even if the out-coming air was hot enough to burn skin, this shivering effect could still persist.
4. Note: The air heater is not designed to heat the bath water. It preheats the incoming air to body temperature.

Care and Maintenance

The Air Massage Bath can be used like a regular bath. No periodic maintenance is required, with the exception of a drying cycle after each use.

The air massage bath includes an electronic control. The drying cycle is part of the electronic control program and is activated 20 minutes after the air massage system was shut off.

The motor bearings of the air blower are lubricated for life.

It is easy to preserve the lasting glow and beauty of the Air Massage Bath. Periodic cleaning will ensure many years of bathing pleasure. To clean, use any liquid type detergent with a soft sponge or cloth and warm water. Never use abrasive cleaners, metal soap pads, acetone, dry cleaning fluid, window cleaning sprays, or ammoniac compound on the surface of the bath or on the plating of the chrome jet heads.

Stains, dulled areas, and light scratches can be removed by gently rubbing with an automobile type cleaning compound followed by an application of any household paste wax.

Warranty

A limited warranty on the products mentioned hereunder is provided and extends only to the original owner or end user for in home use for 3 years. The optional electronic control and blower are warranted free of defects in material, manufacturing, and labor for a period of 3 years from the date of purchase by the original owner or end user from an authorized dealer or distributor. Proof of purchase is required.

If within the warranty period any such product shall prove to be defective of material, manufacturing, or labor defect, it shall be repaired or replaced at the manufacturer's option. This will not include freight or handling charges to or from the nearest repair center.

Exclusions:

1. This warranty shall not apply to incorrect operating procedures, breakage or damage caused by fault, carelessness, negligence, abuse, misuse, misapplication, improper maintenance, alteration or modification of the system for or by the user, chemical or natural corrosion, fire, act of god, or any other casualty.
2. Expressly excluded from the present warranty is the metal plating on the jet heads and touch pad trim kits, as the durability of the plating is dependant on local water conditions.
3. The manufacturer and its distributors are not liable for incidental or consequential damage, loss of time, inconvenience, incidental expenses, labor, material charges, or any other costs related to the application of the present warranty or in connection with the removal or replacement of equipment or components.
4. The manufacturer and its distributors are not liable or responsible for any damages incurred on the product deemed to be caused by freight companies.

Windsor baths are assembled in Australia from local and imported parts. All plumbing is sourced in Australia to ensure a long service life.

Windsor Baths Australia 1800 983 996 Fax 02 88 504692
www.windsorbaths.com.au Established 2000